

2010 State Summary Results

Introduction

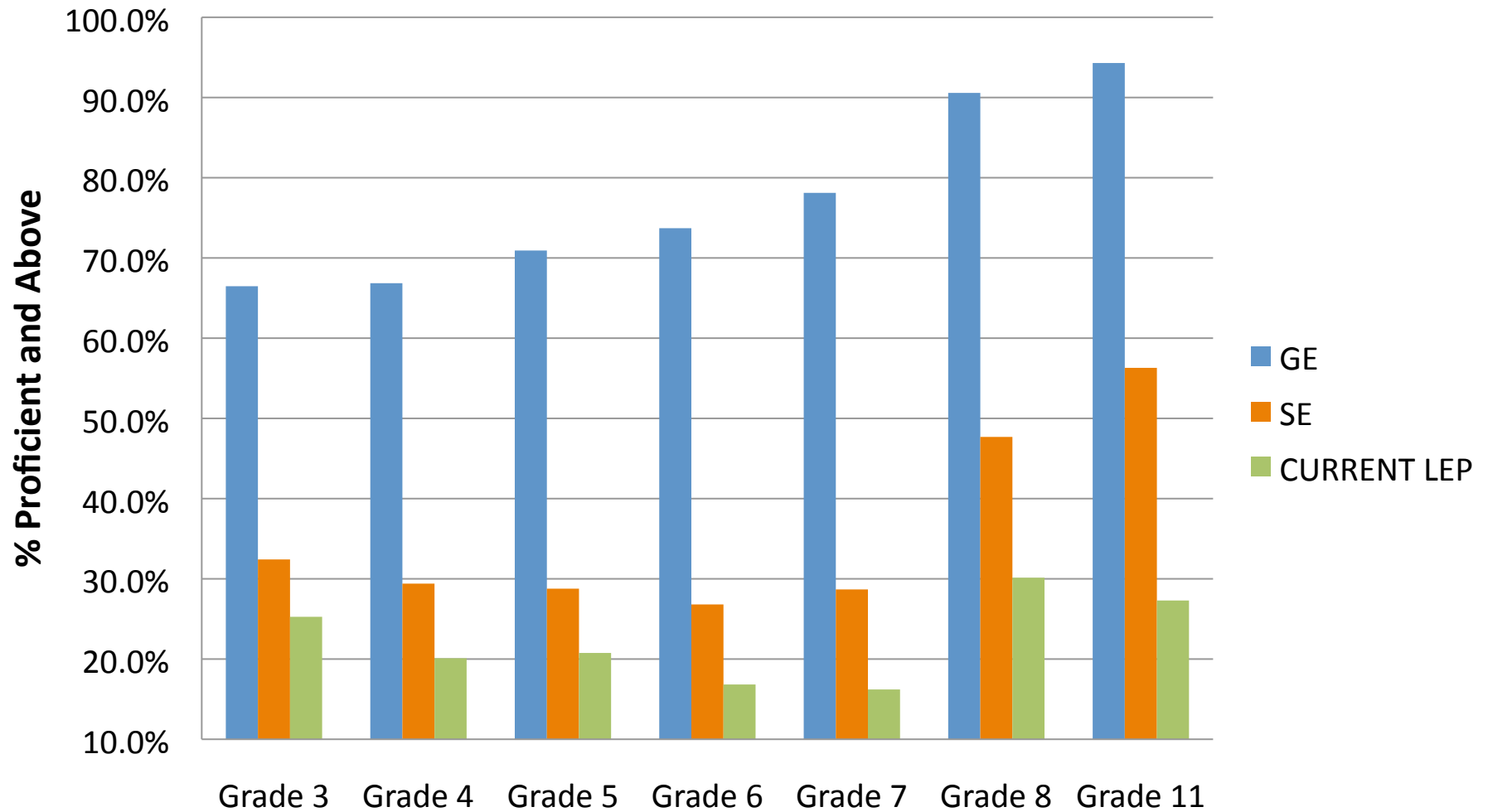
- According to NCLB, every student needs to be assessed in grades 3 through 8 and one time in high school for LAL and Math.
- For Science, every student needs to be assessed in 4th, 8th and one time in high school.

Language Arts Literacy (LAL)

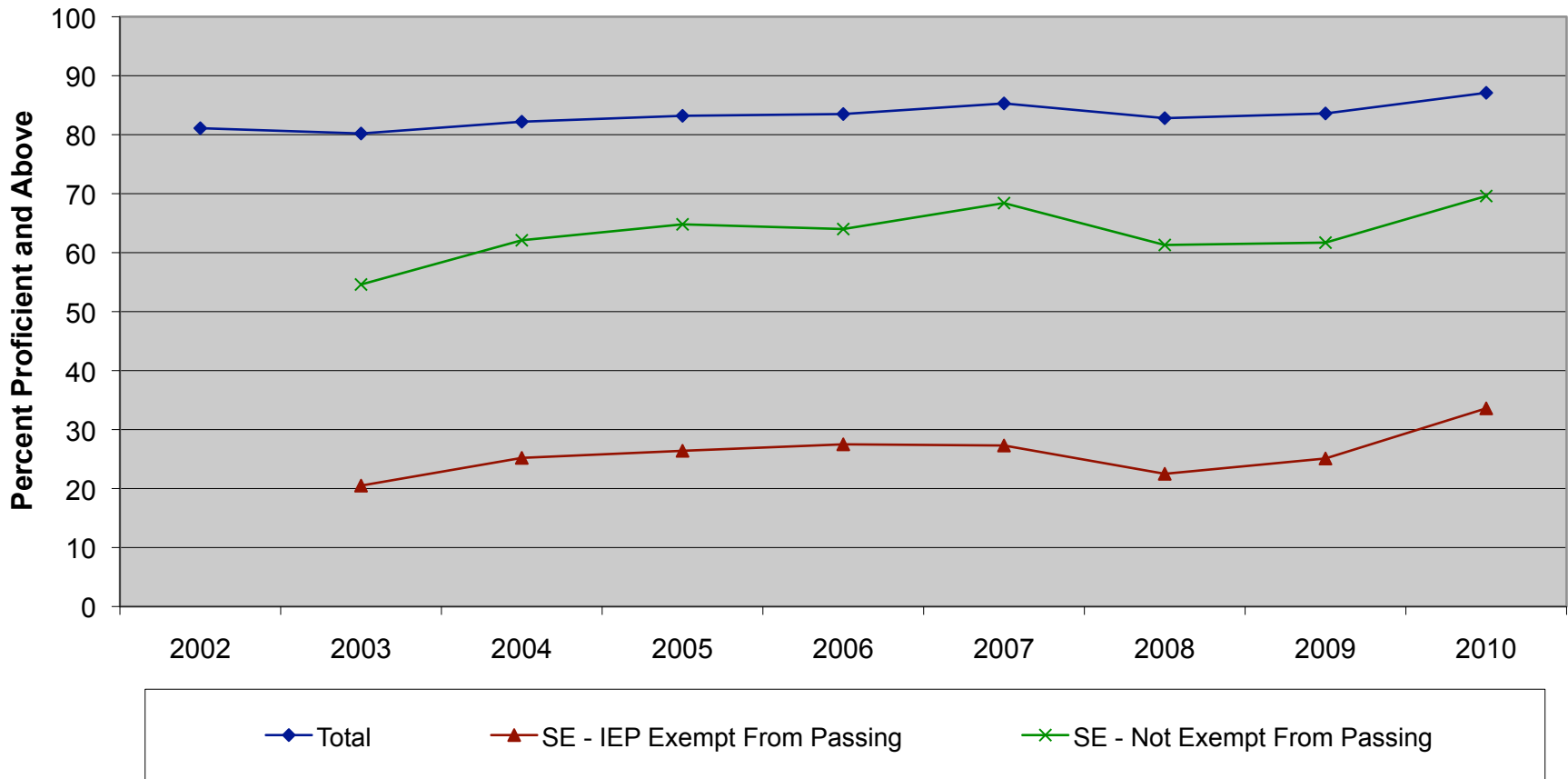
TOTAL STUDENT POPULATION - LAL

Grade	% Prof. & Above 2008	% Prof. & Above 2009	% Prof. & Above 2010	% Prof. & Above Difference Between 2010 & 2009	% Prof. & Above Difference Between 2010 & 2008
3	N/A	62.7	59.7	-3.0	N/A
4	N/A	63.0	59.6	-3.4	N/A
5	59.9	65.8	63.1	-2.7	3.2
6	57.1	69.8	65.3	-4.5	8.2
7	70.3	71.9	69.2	-2.7	-1.1
8	81.1	81.9	82.4	0.5	1.3
11	82.8	83.6	87.1	3.5	4.3

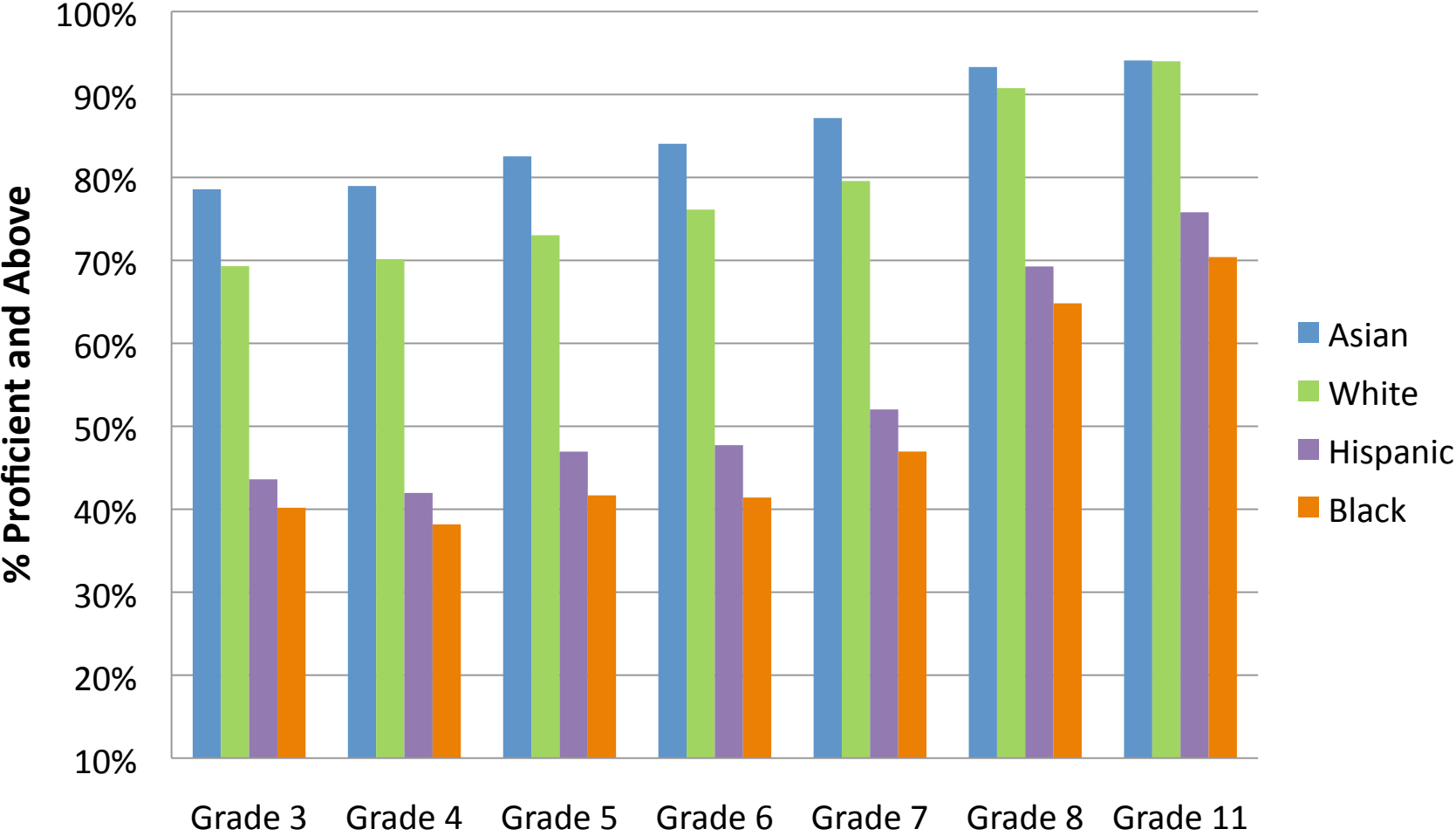
% Proficient and Above by Instructional Group - LAL



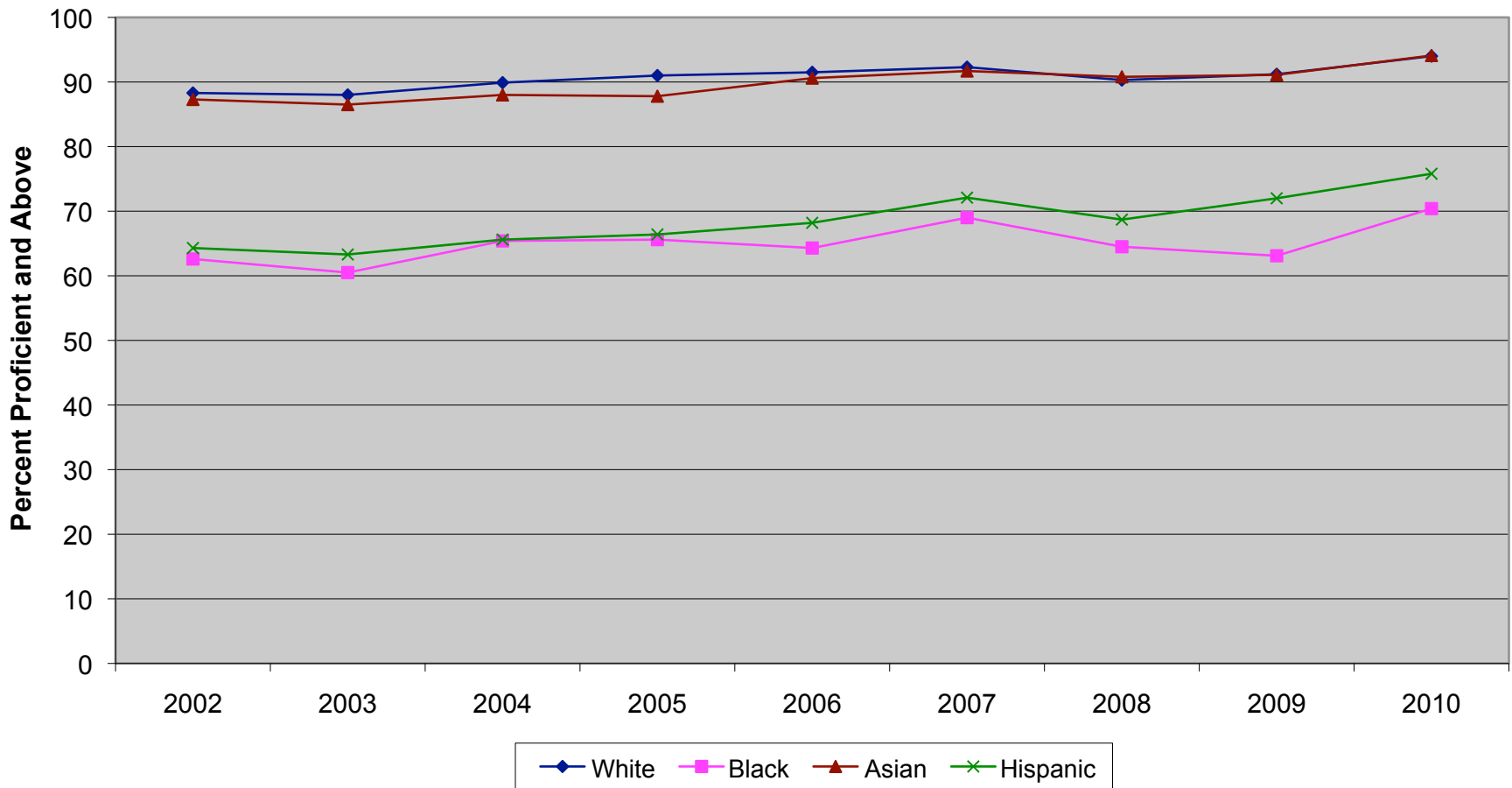
**New Jersey High School Proficiency Assessment
Language Arts Literacy Percent Proficient and Above by Instructional Group
(2002 - 2010)**



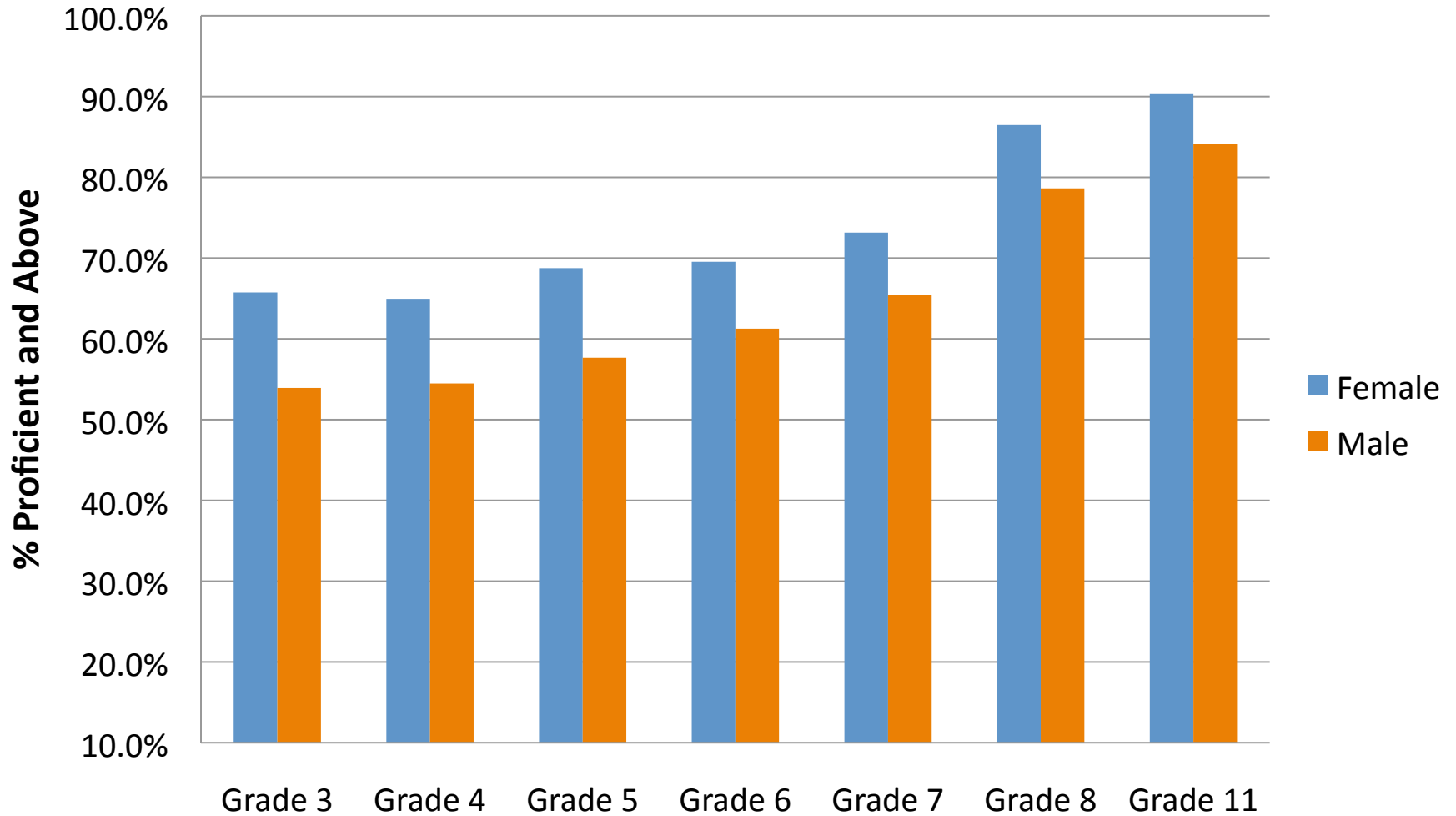
% Proficient and Above by Ethnicity - LAL



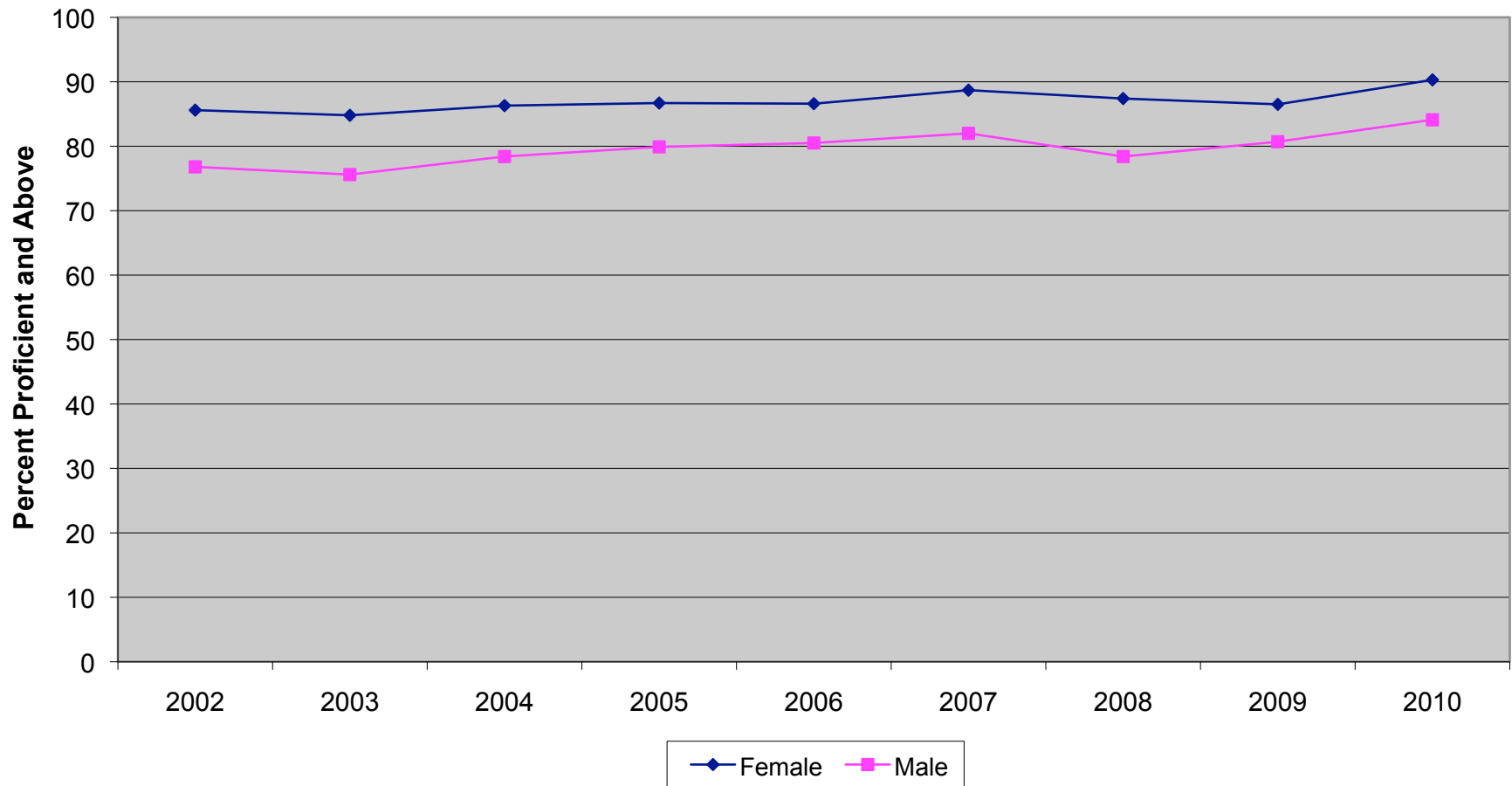
New Jersey High School Proficiency Assessment Language Arts Literacy Proficient and Above by Ethnicity (2002 - 2010)



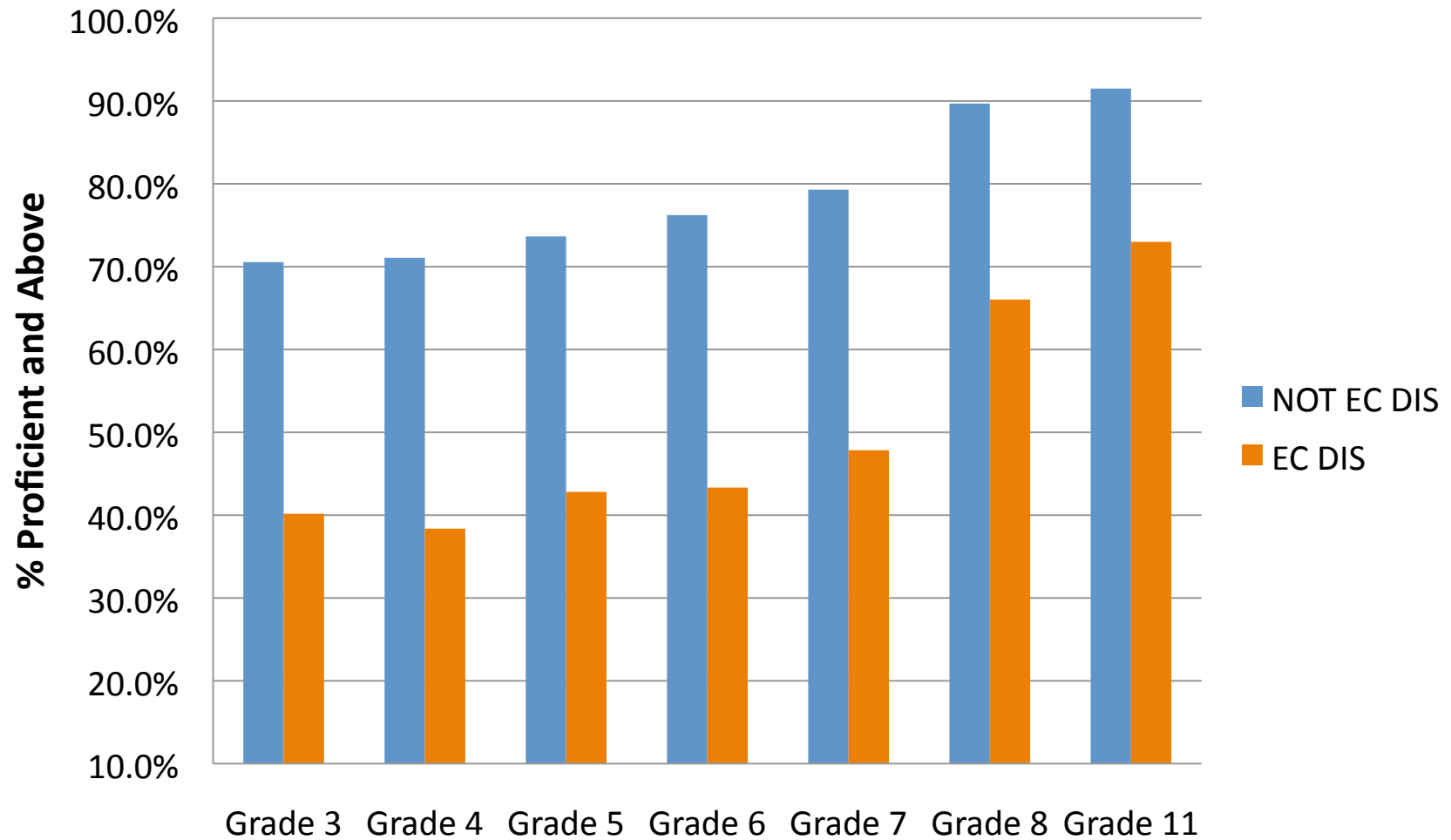
% Proficient and Above by Gender - LAL



**New Jersey High School Proficiency Assessment
Language Arts Literacy Proficient and Above by Gender (2002 - 2010)**



% Proficient and Above by Economic Status -LAL



Alternative High School Assessment- LAL

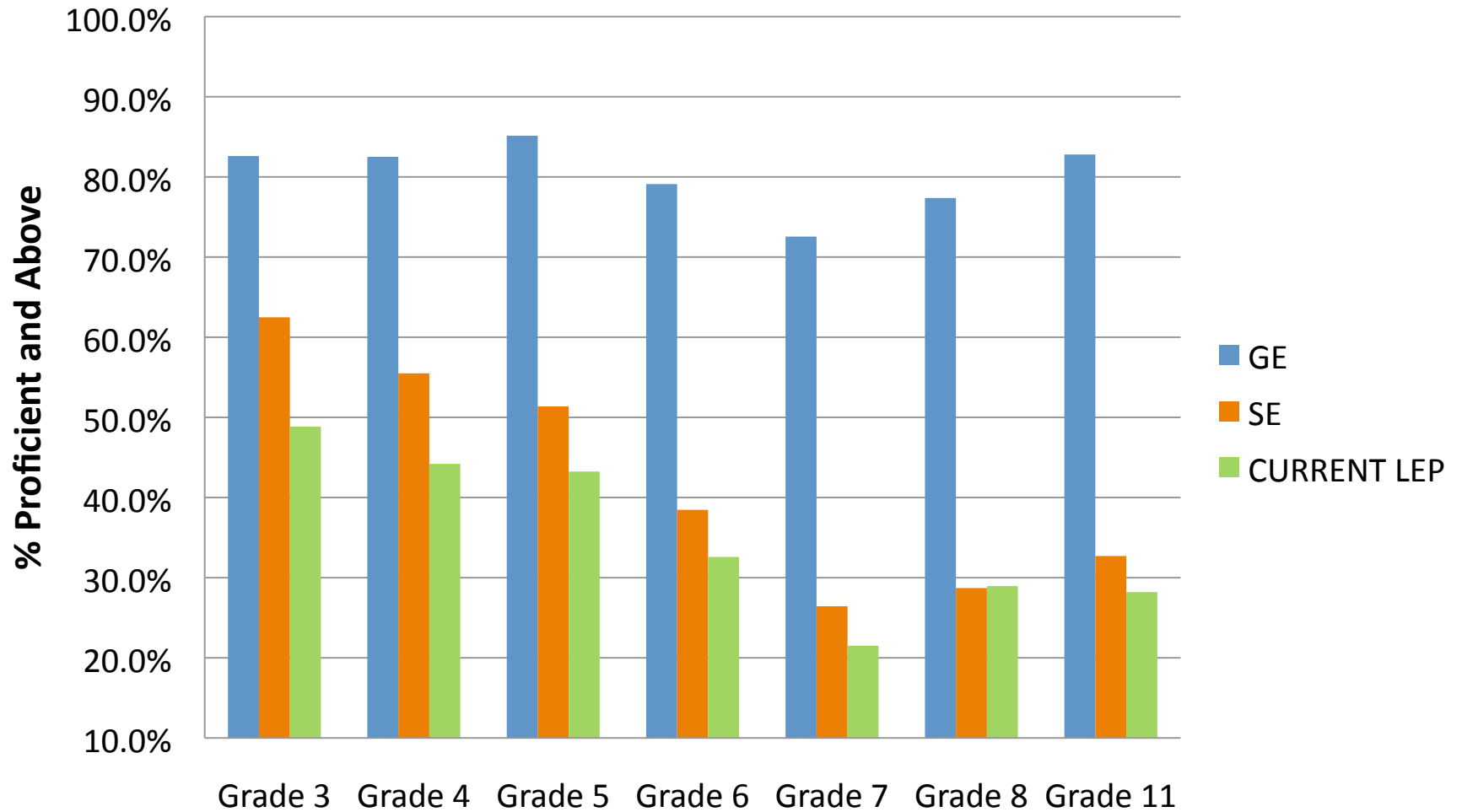
Student Count - <u>Taking</u> Content Area (Took Min. 2 Reading and 1 Writing)	Student Count - <u>Passing</u> Content Area (Took and Passed Min. 2 Reading and 1 Writing)	Percent Passed
5309	2991	56%

Mathematics

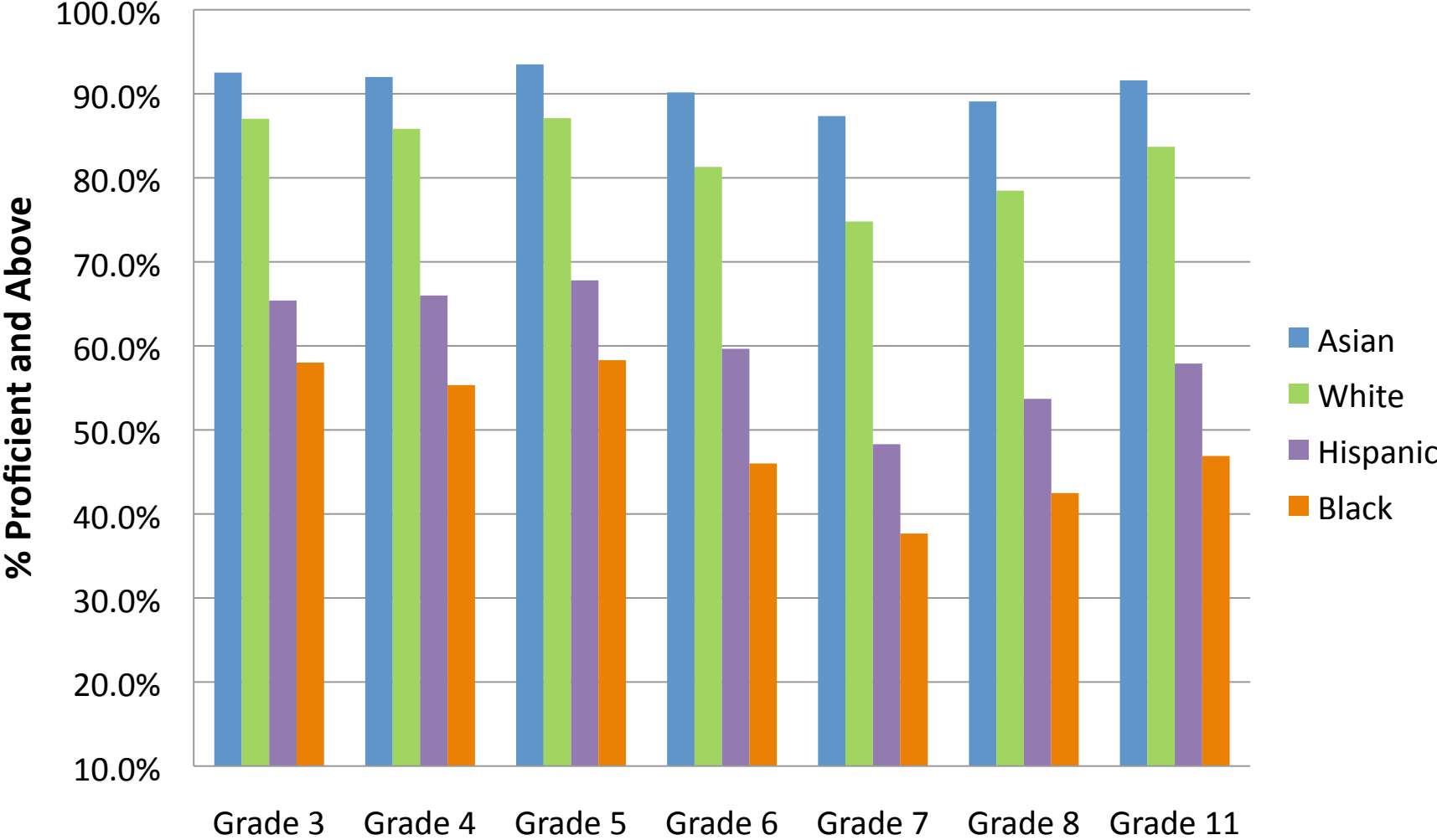
TOTAL STUDENT POPULATION - Math

Grade	% Prof. & Above 2008	% Prof. & Above 2009	% Prof. & Above 2010	% Prof. & Above Difference between 2010 & 2009	% Prof. & Above Difference Between 2010 & 2008
3	N/A	75.2	78.1	2.9	N/A
4	N/A	73.0	77.0	4.0	N/A
5	76.5	77.3	78.7	1.4	2.2
6	72.0	70.9	71.8	0.9	-0.2
7	64.3	66.3	64.3	-2.0	0.0
8	67.4	71.2	68.5	-2.7	1.1
11	74.8	72.8	74.1	1.3	-0.7

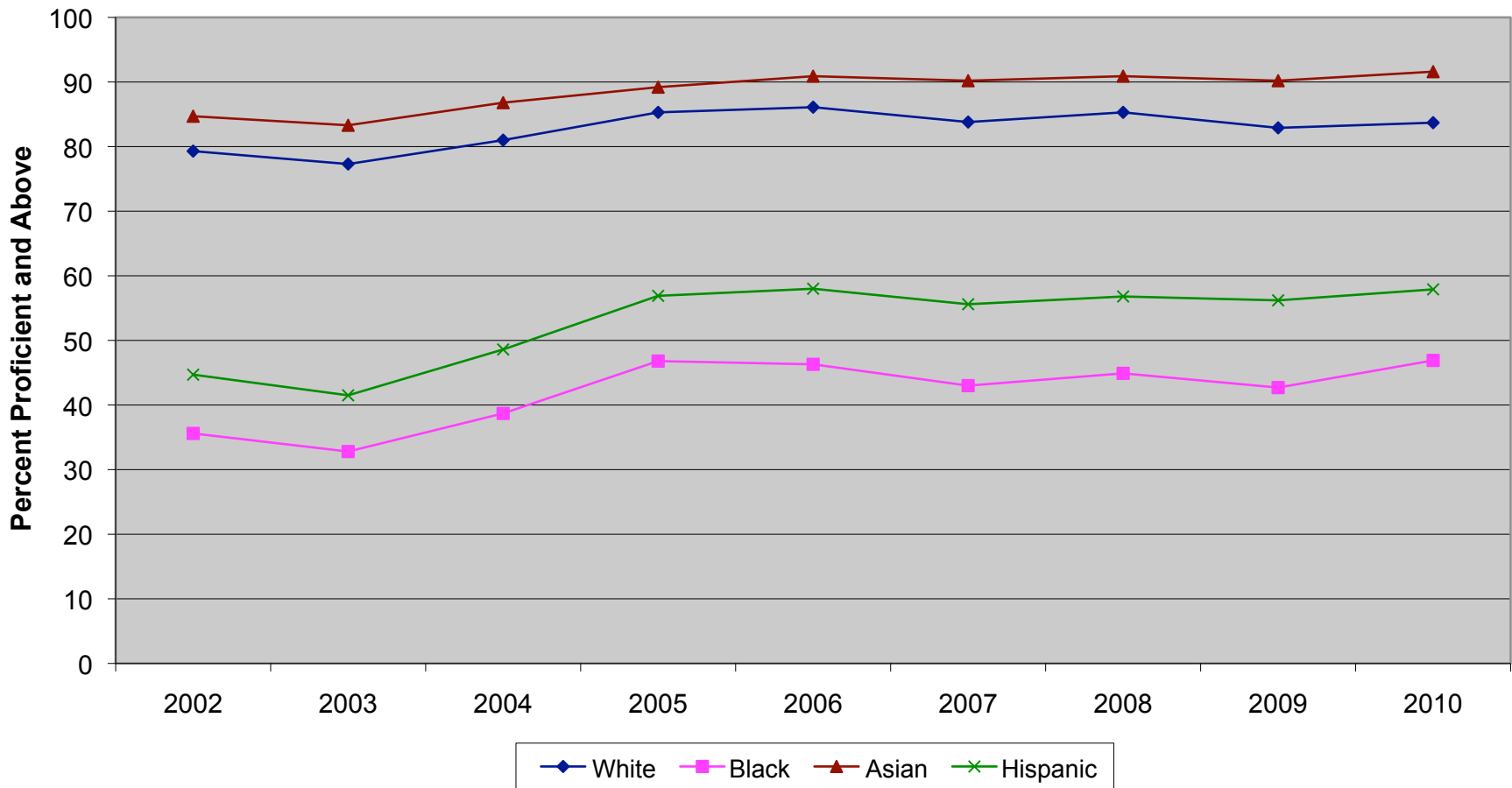
% Proficient and Above for Instructional Level - Math



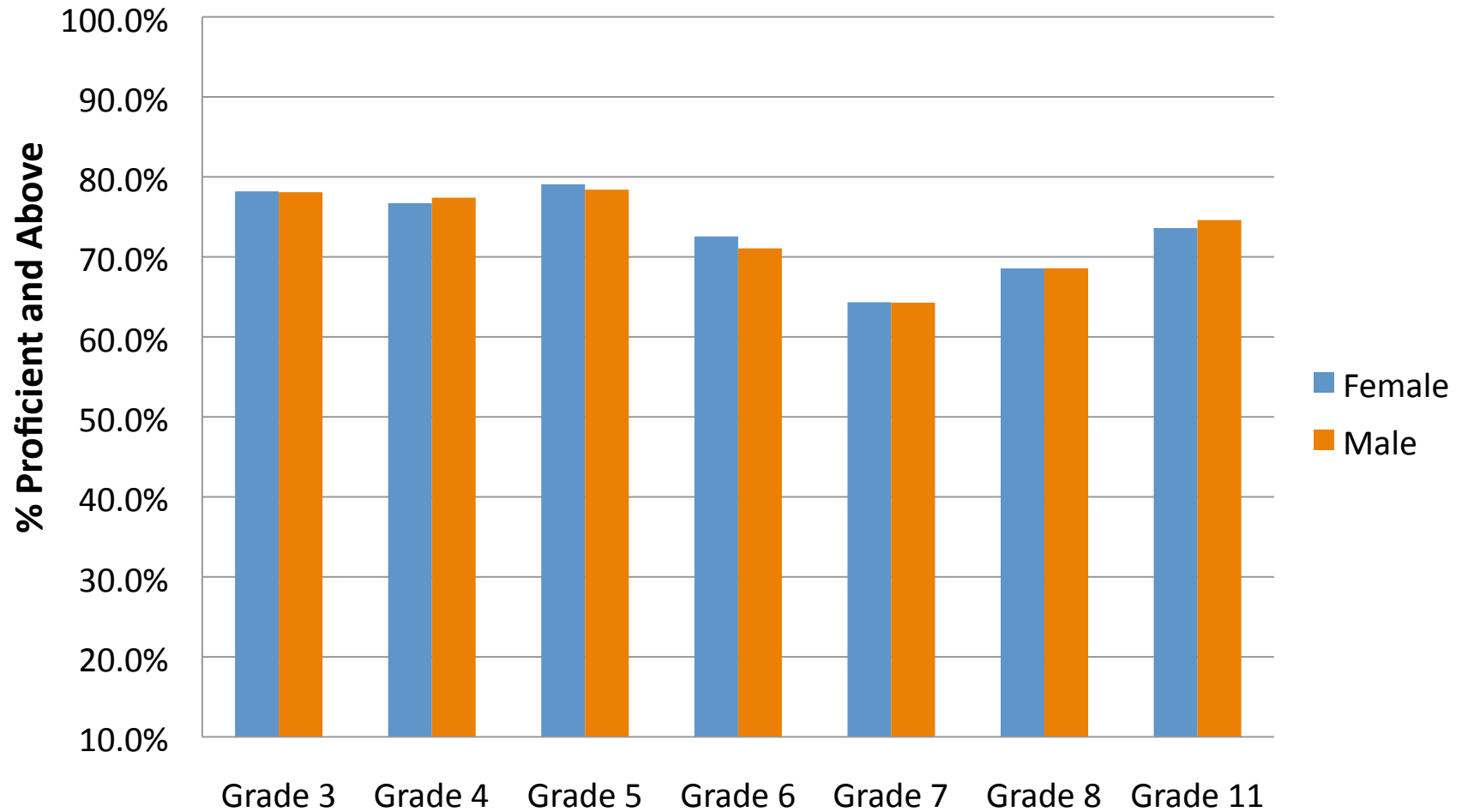
% Proficient and Above By Ethnicity - Math



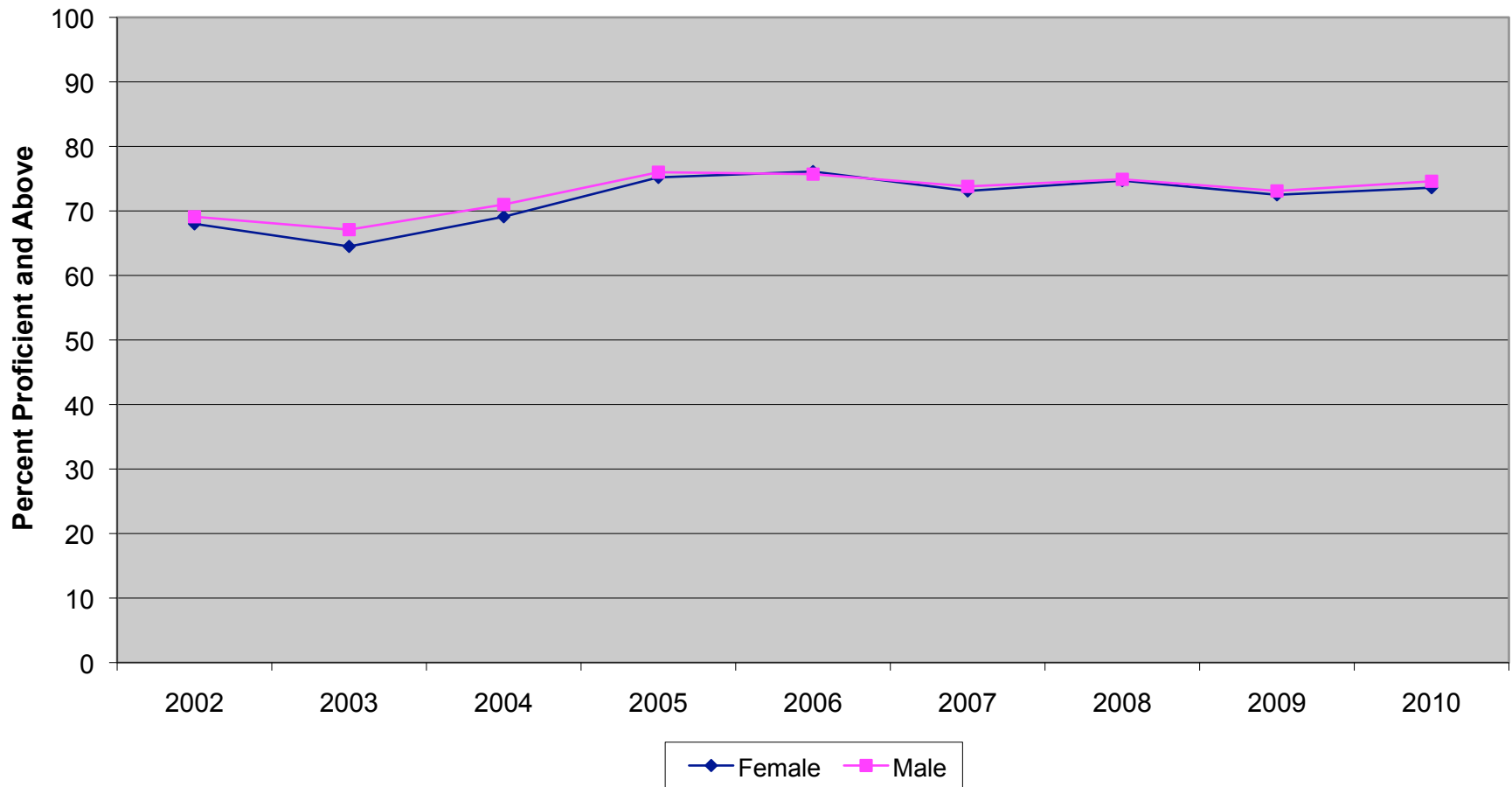
**New Jersey High School Proficiency Assessment
Mathematics Proficient and Above by Ethnicity (2002 - 2010)**



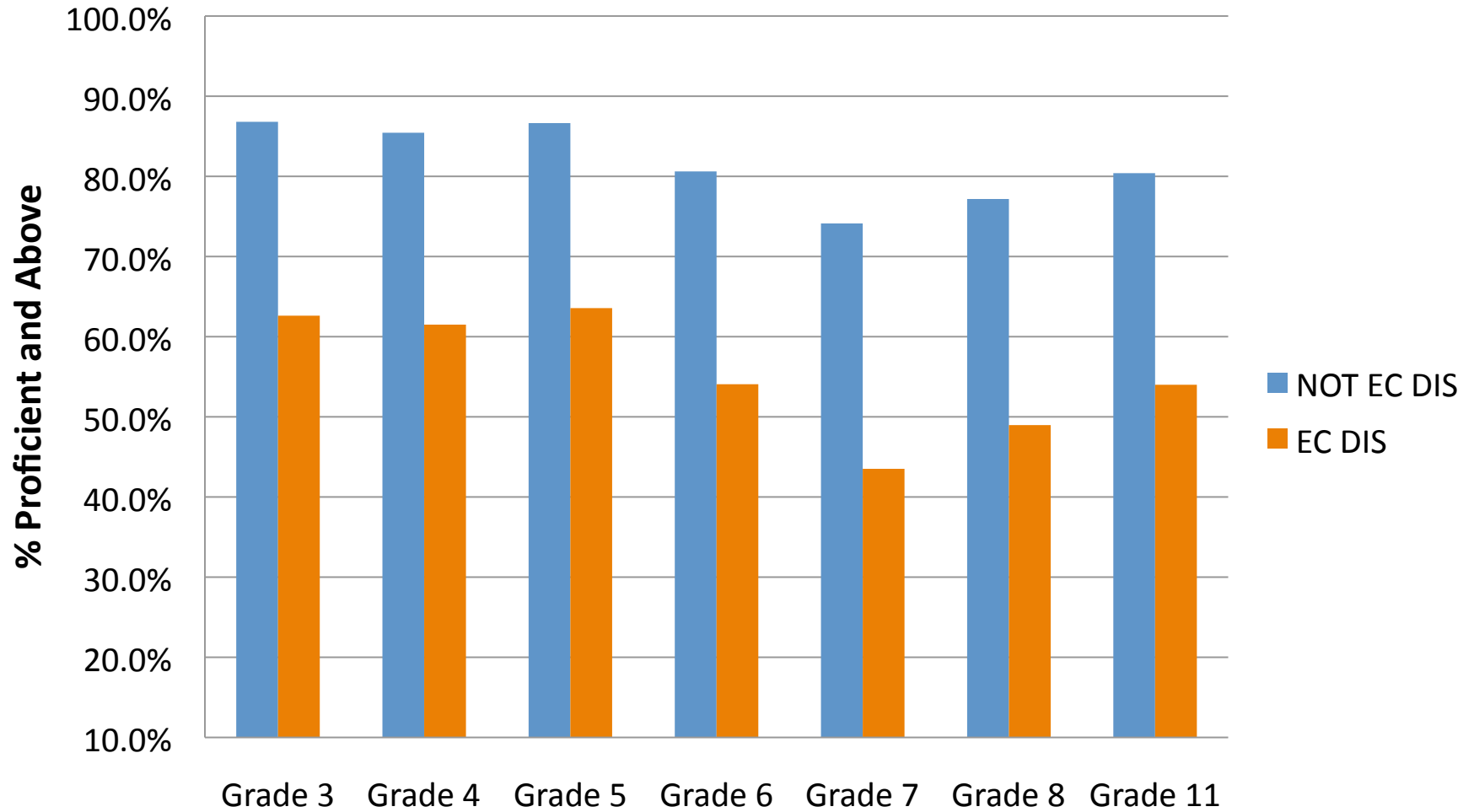
% Proficient and Above by Gender - Math



**New Jersey High School Proficiency Assessment
Mathematics Proficient and Above by Gender (2002 - 2010)**



% Proficient and Above by Economic Status -Math



Alternative High School Assessment- Math

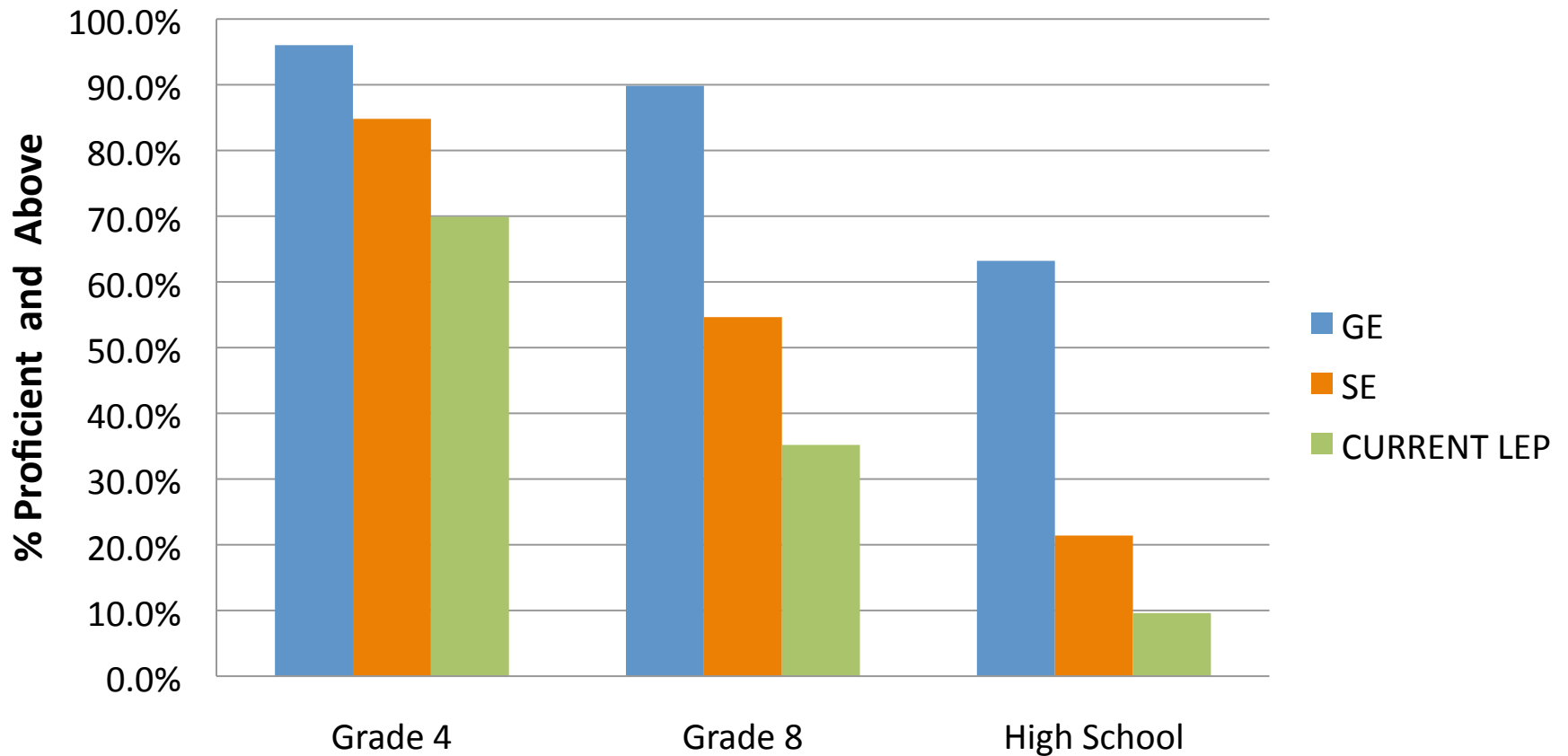
Student Count - <u>Taking</u> Content Area (Took all 4 Math Standards)	Student Count - <u>Passing</u> Content Area (Took and Passed all 4 Math Standards)	Percent Passed
10816	8497	79%

Science

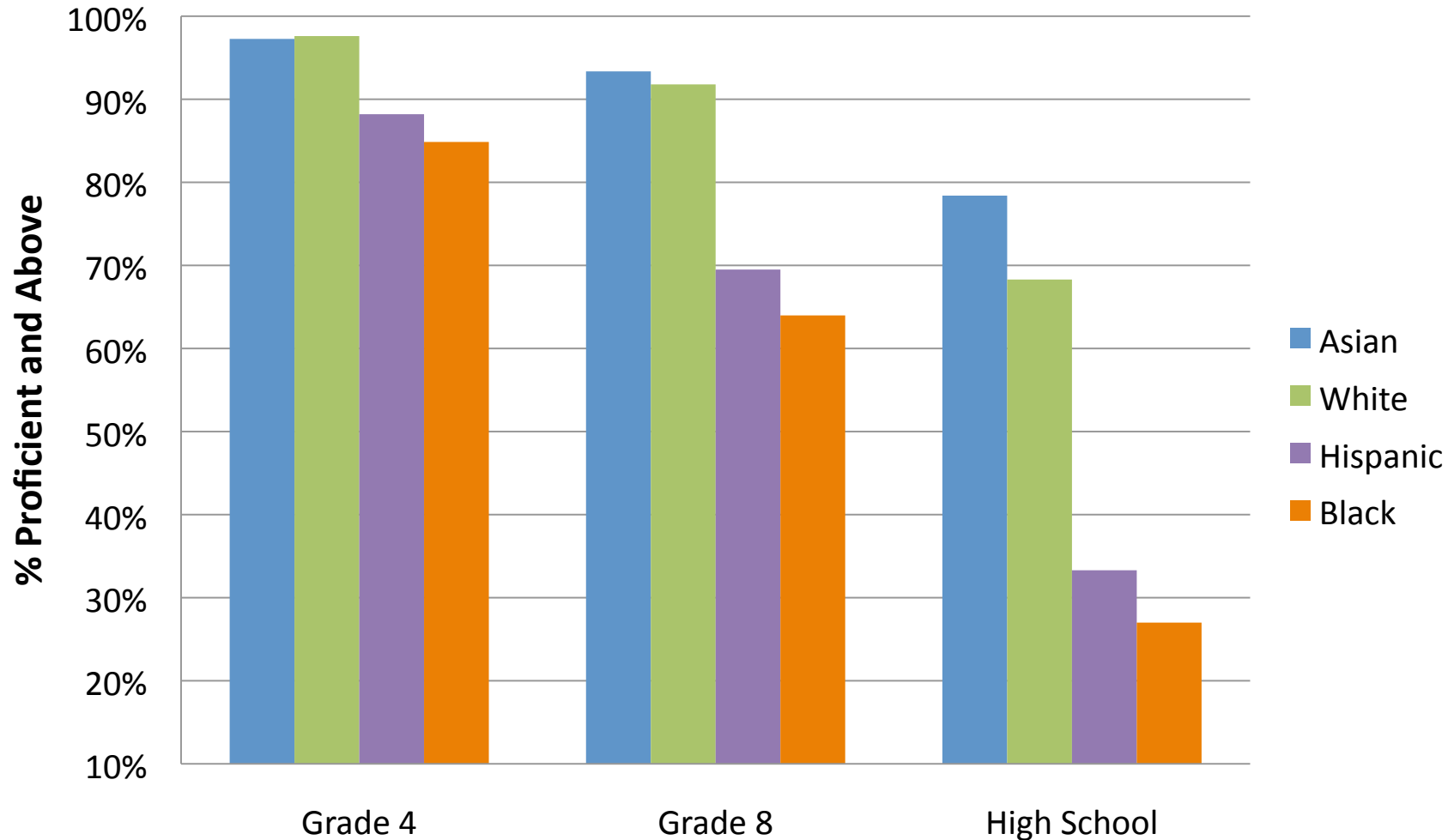
TOTAL STUDENT POPULATION - Science

Grade	% Prof. & Above 2008	% Prof. & Above 2009	% Prof. & Above 2010	% Prof. & Above Difference Between 2010 & 2009	% Prof. & Above Difference Between 2010 & 2008
4	85.0	90.9	93.4	2.5	8.4
8	84.0	84.1	83.0	-1.1	-1.0
High School	N/A	N/A	55.9	N/A	N/A

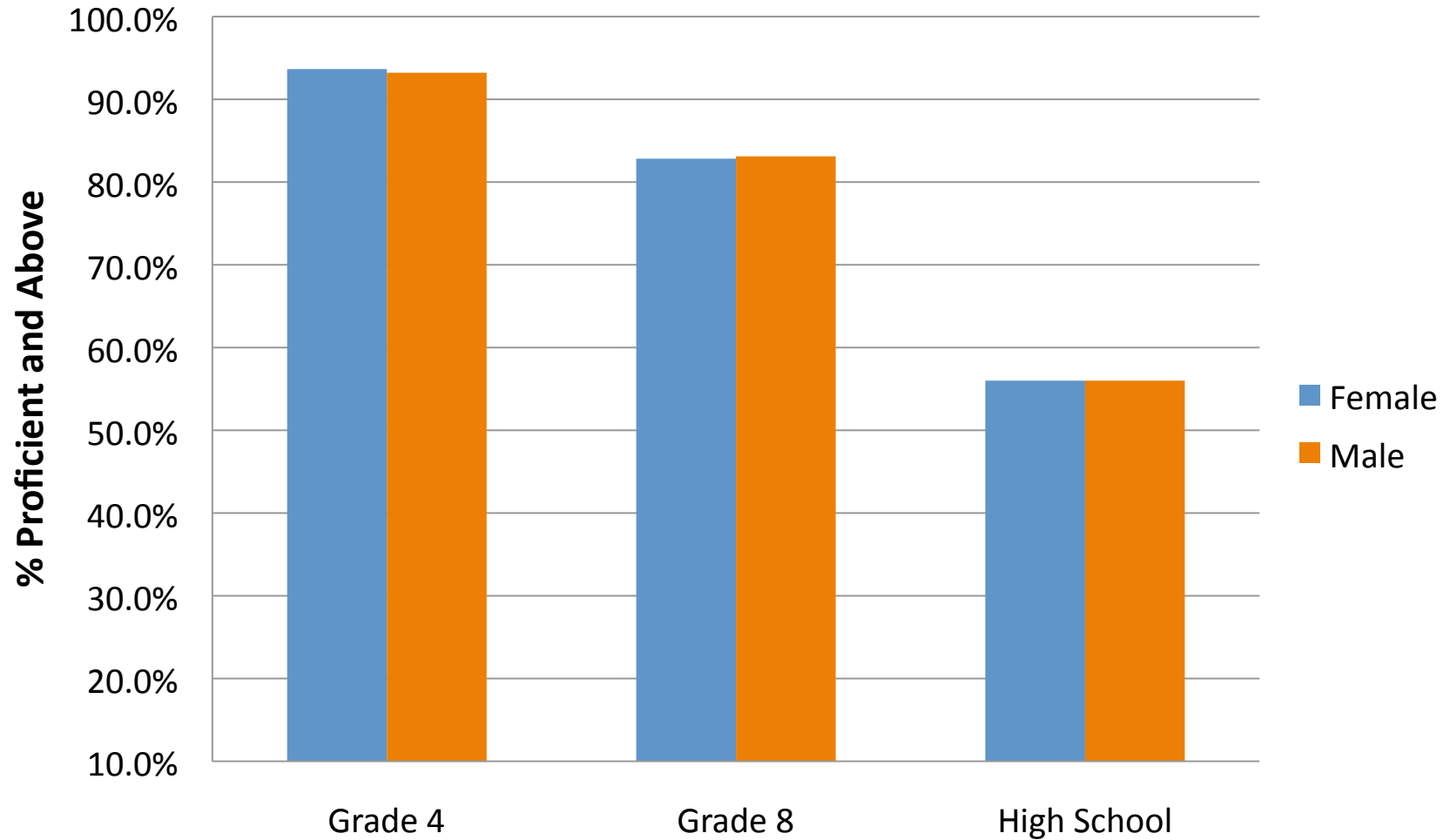
% Proficient and Above for Instructional Level - Science



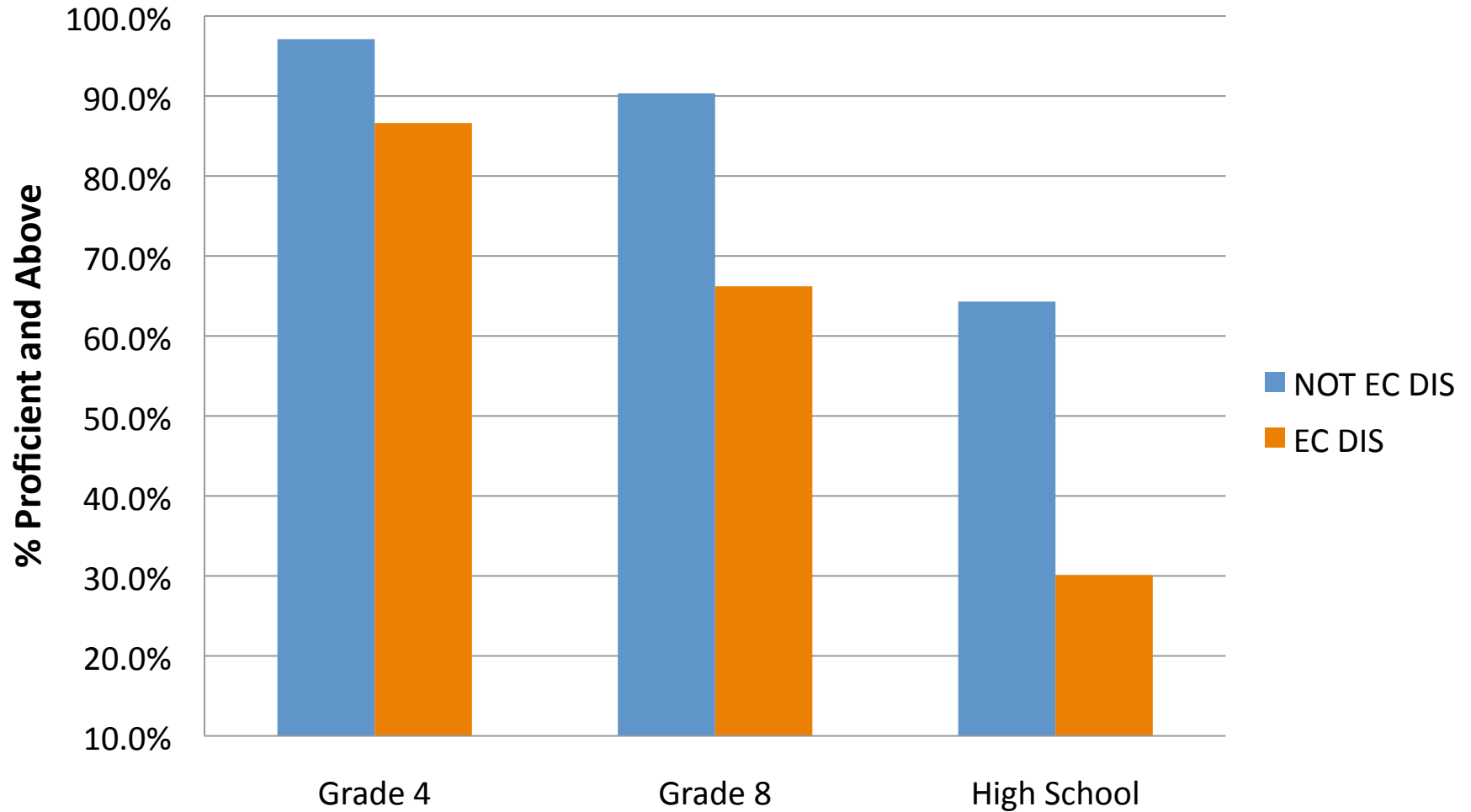
% Proficient or Above By Ethnicity - Science



% Proficient and Above by Gender - Science



% Proficient and Above by Economic Status -Science



Summary

- Mixed Results

- LAL

- Decrease in performance from 2009 to 2010 for grades 3 through 7, but the results were similar or increased when compared to the base year 2008.
 - Gains in HSPA LAL.

- Math

- Increase in performance at grades 3 & 4, but a decrease at grades 7 & 8 from 2009 to 2010.
 - Results were similar to the base year 2008 for grades 5 through 8.
 - HSPA Math results were flat.

Summary (cont.)

—Science

- An increase in performance in 4th grade, and the performance was flat for 8th grade.

—Racial/ethnic and Economic status achievement gaps exist in LAL, Math, and Science.

—No gender achievement gap in Math or Science.